

MAIN FLOOR

Note: The purpose of this drawing is to understand the layout of this property. Drawings are not drawn to exact scale. Exterior porches are shaded in Blue. Interior closets are shaded Dark Grey.



18 Windjammers Way
Main Level Floor plan

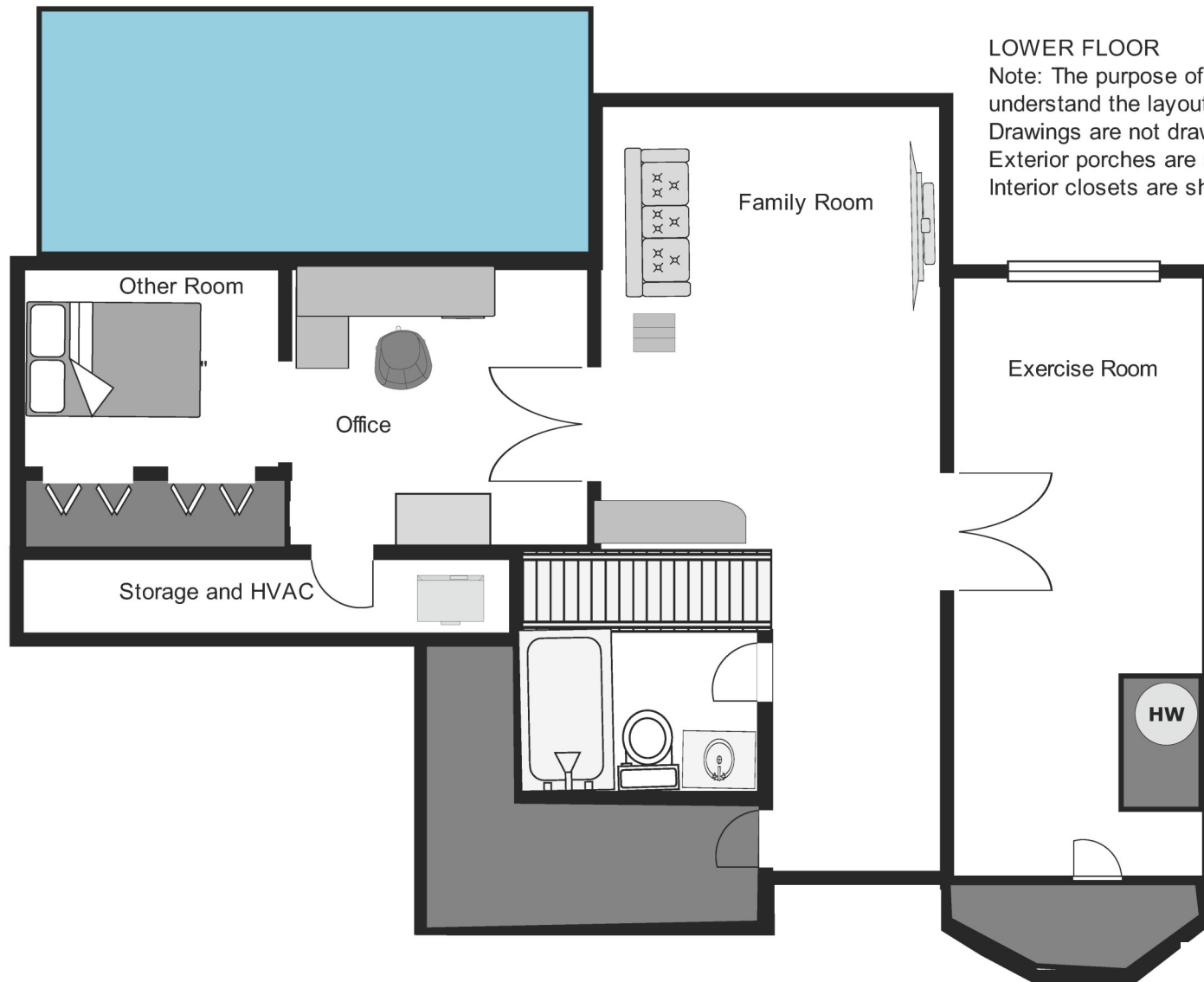
2nd FLOOR

Note: The purpose of this drawing is to understand the layout of this property. Drawings are not drawn to exact scale. Areas of the first floor that are not part of the 2nd floor are shaded in Black. Interior closets are shaded Dark Grey.



18 Windjammers Way
Upper Level





LOWER FLOOR

Note: The purpose of this drawing is to understand the layout of this property. Drawings are not drawn to exact scale. Exterior porches are shaded in Blue. Interior closets are shaded Dark Grey.

18 Windjammers Way
Lower Level

